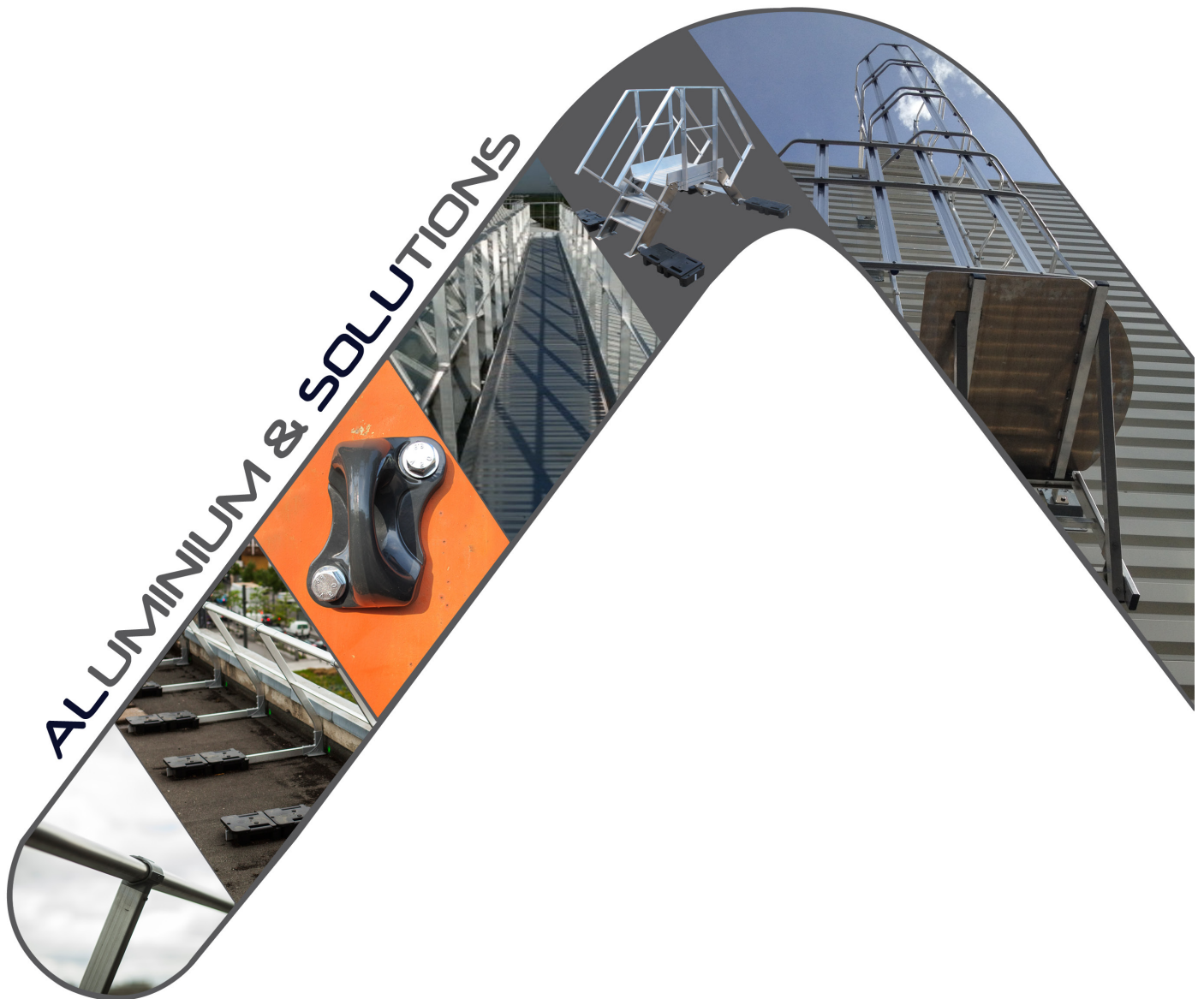


ALSOLOGO

ÉQUIPEMENTS DE SÉCURITÉ ET FABRICATIONS POUR LE BÂTIMENT



CATALOGUE PRODUITS : ÉQUIPEMENTS DE SÉCURITÉ POUR LE TRAVAIL EN HAUTEUR

Édition : NOVEMBRE 2013

SUMMARY

3 / ALSOLU

4 / DESIGN OFFICE

5 / AGUERRI

6-7 / MEMO: PREVENTION FROM THE HEIGHT'S FALLS

8-20 / COLLECTIVE PROTECTION

VECTACO® free standing guardrail
VECTACO® roof slab guardrail
VECTACO® parapet guardrail
VECTACO® z plate fixation guardrail
VECTACO® metal deck guardrail
VECTACO® top fix guardrail
Folding system for VECTACO® guardrail
VECTACO® skylights protection

21-24 / ROOF ACCESS

VECTALADDER® two-section extension ladder
VECTALADDER® alu pro line simple ladder
VECTALADDER® exit crosses
VECTALADDER® cage ladder
VECTALADDER® cage ladder components

25-27 / ROOF CIRCULATION

VECTAWAY® cross-over ladder
VECTAWAY® footboard
VECTAWAY® shed
VECTAWAY® gangway
VECTAWAY® crossover gangway

28-29 / TECHNICAL ROOF EQUIPMENT

Access gangway for technical material
VECTACO® demarcation system
Supporting structure for technical material

30-31 / PERSONAL PROTECTION

VECTASAFE® anchorages



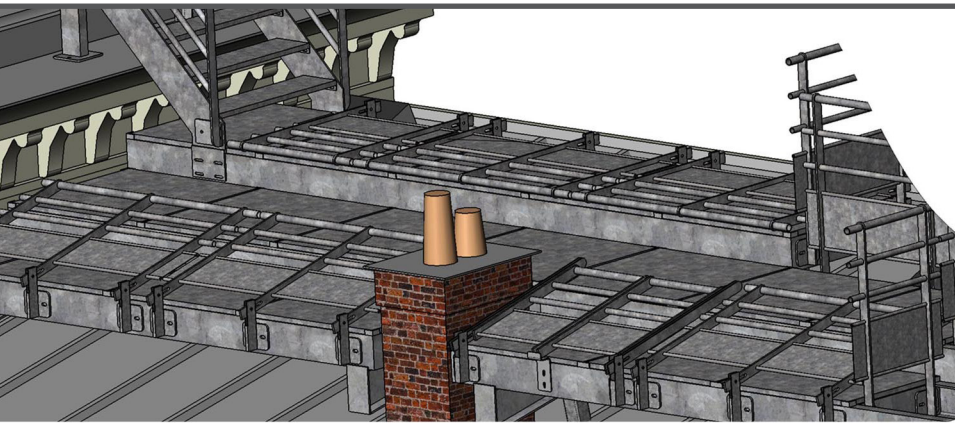
ALSOLU

We provide you a range of complete aluminum solutions for security implementation of buildings. Our range of standard products comes in four main categories:

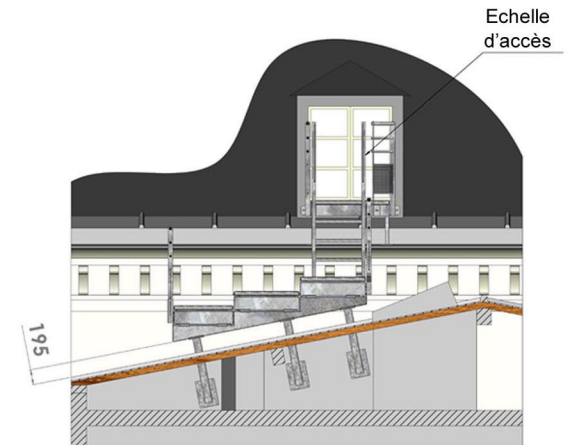
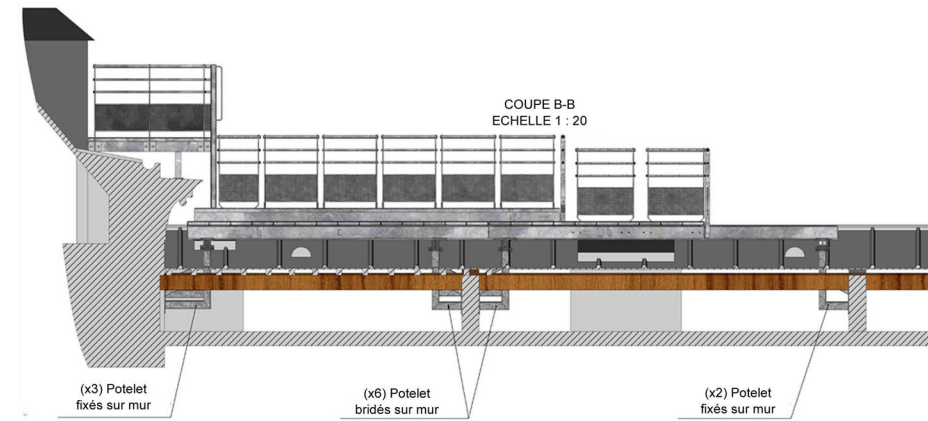
- Collective protection.
- Roof access.
- Roof circulation.
- Personal protection.

Our design office allows the conception of tailored solutions to comply with specific requests.

Upon request, we can provide you technical data sheet, or technical instructions or compliance certificates.



- Création d'une passerelle de secours avec garde-corps rabattable en acier galvanisé thermolaqué pour évacuation du personnel.
- Fixation par potelets supports sur murs existants.
- Réalisation de notes de calcul.

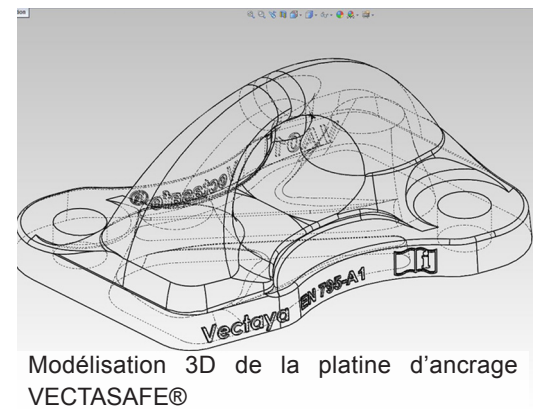
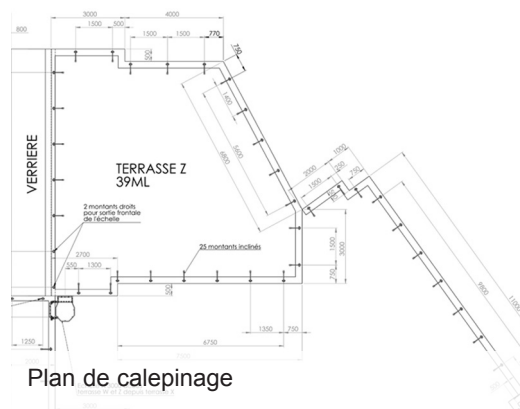
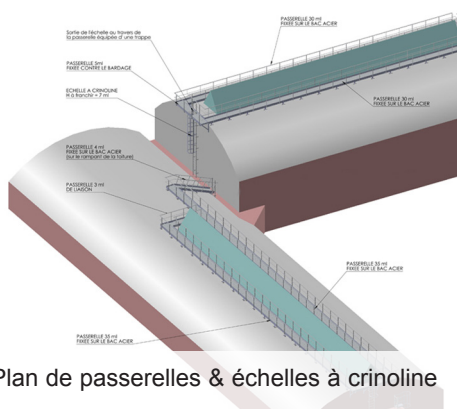


DESIGN OFFICE

Our design office, specialized in mechanical engineering, runs your project from A to Z. Fitted out with 3D modeling software, it will:

- Analyze the bill of specifications.
- Take the dimensions on the site.
- Carry out a pre-study and a budgeting.

- Size the structures by calculations in compliance with the standards in force thanks to a powerful software and a calculation by ended element with a linear or nonlinear solver.
- Design the master and detail plans to build the project.
- Write up the design calculations for the control organism installation reception.
- Follow-up the manufacture and installation until the final reception.





AGUERRI

AGUERRI created in 1966, is our partner in charge of ALSOLU productions. It has a factory of more than 4000 m² dedicated to the work of aluminum and a fleet of CNC machines.

Each year, we process more than 500 tons of aluminum.

ALSOLU & AGUERRI are engaged in the quality of their products.

AGUERRI est certifié ISO 9001 : 2008 (numéro de certification : ES026718). Cette certification valide notre performance dans la traçabilité et la qualité de nos produits, le respect des exigences réglementaires applicables et l'amélioration de la satisfaction clients.



MEMO: PREVENTION FROM THE HEIGHT'S FALLS

INTRODUCTION

"In France, falls from height are the second mortality cause at work and the third permanent incapacity cause of work stoppage.

For the only sector of the Construction Industry, the work in height is the main cause of occupational accidents. In 2009, falls from height was the direct cause of death for 49 workers (it means 35% of the working fatal accidents of Construction Industry; 1 death by week)."

Origin of falls from height in Construction Industry:

- work on scaffolds, on platform without guardrail or without safety harness properly fasten,
- work on fragile roofs, on ladders badly maintained, placed and/or fixed,
- falls from ladders while using them at work.

WHO IS CONCERNED?

Falls from height can happen from the roofs, building terraces, means of access to height areas (ladders, gangways, etc) or pylons.

All the establishments are concerned:

- industrial establishments, commercial or agricultural establishments and their outbuildings.
- publics or ministerial offices,
- licensed professionals,
- civil societies,
- professional syndicates,
- association or group from any nature
- public establishments determined by statutory that insure in the same time a public service mission with administrative character, industrial and commercial,
- public establishment workshops providing a technical or professional teaching.

WHAT ARE THE REGULATIONS?

The risks prevention resulting from work in height is at the origin, treated in work code and in statutory

n°65-48 of 8 January 1965.

- The Work code defines particularly the devices that are needed by the establishment chief for the working places layout and also the applicable dispositions to the project manager including those from the article R.235-3-20 and overall from the article R.235-5 which creates the obligation to plan a file of work places maintenance.

- The statutory n°65-48 dated 8th January 1965, regarding the particular measures of protection and hygiene applicable to the establishments which staff is realizing buildings works, publics works and any other works concerning buildings, deals with several recommendations to fight against fall from height risks.

- The statutory n°2004-924 dated 1st September 2004, revising the work code, involves a new regulatory framework. It translates the directive 2001/45/CE dated 27th June 2011 and it is an opportunity to review and update the statutory n°65-48 dated 8th January 1965. In this way, the two largest changes planned by this statutory are:

The introduction of devices against falls from height for all sectors of economic activity subjected to work code and not only for the Construction Industry.

In reality, it modifies and updates the statutory of 1965 by reminding the obligations of project managers and business managers regarding staff and involved persons safety.

In conformity with the article L 230.2 of work code, the business manager or the project manager must favour collective protection measures by giving them the priority on the individual protection.

This demand is specified by the 1st September 2004 statutory.

WHO IS RESPONSIBLE?

From the beginning of the conception of a project, a general organizing and organization obligation is applied to the project manager and to the whole involved persons:

Project managers, coordinators, companies, including independent workers and subcontractors.

WHICH SANCTIONS?

Penal responsibility for everyone

The penal law intends some general sanctions in the following cases:

- deliberately endangering another person
- fault of recklessness, negligence or breach of duty to the obligation of prudence or security planned by the law or regulation.

Several examples of penal sanctions:

Inflict to the others an working incapacity during more than 3 months, may be penalized by 2 years of incarceration and a 30 000 € fine (Article 222-19), inflict the death of a person (intentional homicide) can be penalized by 3 years of incarceration and a 45 000 € fine.

Retirement and alert right of an employee

There is an existing right of retirement and alert to the benefit of the employee whom has a reasonable cause to believe that his situation involves a serious and imminent danger for his life or health (law n°82-1097 dated 23/12/82 translated in work code as articles L.4131-1 and following ones).

The employer or the project manager cannot ask to the employee to continue his task in a serious and imminent dangerous working situation (article L4131-1 2nd paragraph of work code) and cannot penalize him

The injunction

Following the jurisprudence, a company which does not respect the safety and hygiene measures planned by the work code can be obliged to take some necessary measures in order to re-establish the normal hygiene and security conditions.

The stop of building site

In the event of absence or failure of protection measures implement against falls from height, a building site can be partially or totally stopped by the labour inspector (article L.4731-1).

Inexcusable conduct

The inexcusable conduct has been defined by the jurisprudence judgment dated 16th July 1941. In this way the project manager or the employer can be penalized if the inexcusable conduct is retained (for instance if the settlement of a collective protection has not been realized while it used to be technically possible to do it).

WHICH KIND EQUIPMENT HAS TO BE SETTLED?

As stated in the work code and the statutory dated 1st September 2004, the collective protection should be privileged to the individual one. It is obligatory to settle security equipment as safe and resisting guardrail, which have to be in conformity with the French standard NF E85-015 or the European one EN ISO 14122-3.

Remind of the standard:

- When the height of fall is superior to 500 mm, a guardrail has to be installed
- The height of the handrail must be between 1000 mm and 1100 mm above the circulation ground.
- The free space between the handrail and the mid-rail as well as the space between the mid-rail and the toeboard must be inferior or equal to 500 mm.
- A 100 mm minimum toeboard has to be settled at 10 mm maximum from wandering surface and from the platform edge.
- The maximum space between the axles of the supports must be 1500 mm.
- If the handrail is interrupted, the free space between the 2 segments of this one have to be included between 75 mm and 120 mm. If the free space is larger than the maximum authorized, a barrier permitting to insure the security against fall of the guardrail has to be settled.

VECTACO® inclined free standing guardrail (VAP-i2)

STANDARDS

NF EN ISO 14122-3
& NF E85-015



VECTACO® FREE STANDING GUARDRAIL

The VECTACO® free standing guardrail avoids any intervention of roof drilling. It is the best solution to secure terraces when it is technically not possible to fix the guardrail to either a parapet wall or concrete slab.

Guardrail material: aluminum.

Coating: raw, anodized or powder coated (ral colours) upon request.

Weight of a plastic pad (x2) : 12,5 kg.

Standard uprights angle: 30° or 15° upon request

Comply with standards: European EN 14 122-3 and French NFE 85-015.

+ GAIN DE TEMPS À LA POSE

T + BASE PRE-ASSEMBLED

In order to diminish the time to install the equipment, Vectaco guardrails T are assembled in the factory on the upright. The bases are pre-assembled on the struts too. The plastic clipped pads preserve the watertightness of the roof.

COUNTERWEIGHT

The counterweight with the plastic shell avoids any deterioration of the roof watertightness.

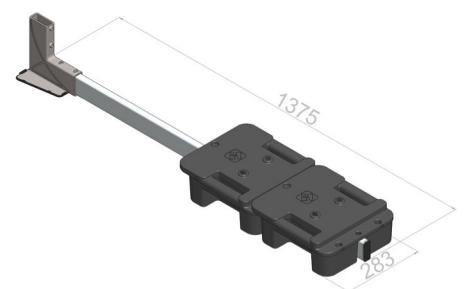
Each upright is composed of two counterweight of 12,5 kg for each counterweight.

The handles of the plastic pads allow a good catch in hand and simplifies handling.

+ PRÉSERVE L'ÉTANCHEITÉ



| MODEL | STRAIGHT | INCLINED | CURVED | FOLDABLE |
|-----------------------------------|----------|----------|--------|----------|
| Handrail + middle rail | VAP-D2 | VAP-i2 | VAP-C2 | VAP-R2 |
| Handrail + middle rail + toeboard | VAP-D3 | VAP-i3 | VAP-C3 | VAP-R3 |



VECTACO® straight roof slab guardrail (VSD-D2)

STANDARDS

NF EN ISO 14122-3
& NF E85-015



VECTACO® ROOF SLAB GUARDRAIL

The VECTACO® roof slab guardrail is a collective protection system against fall from height dedicated to the protection of non-public roof terraces.

This equipment is the best solution when a guardrail on slab has to be fixed through the watertightness complex or in green roofs.

It has been design for a quick and simple set-up notably thanks to the swage handrails and middle rail.

Guardrail material: aluminum

Coating: raw, or powder coated (RAL colours) upon request.

D shoe material: aluminum

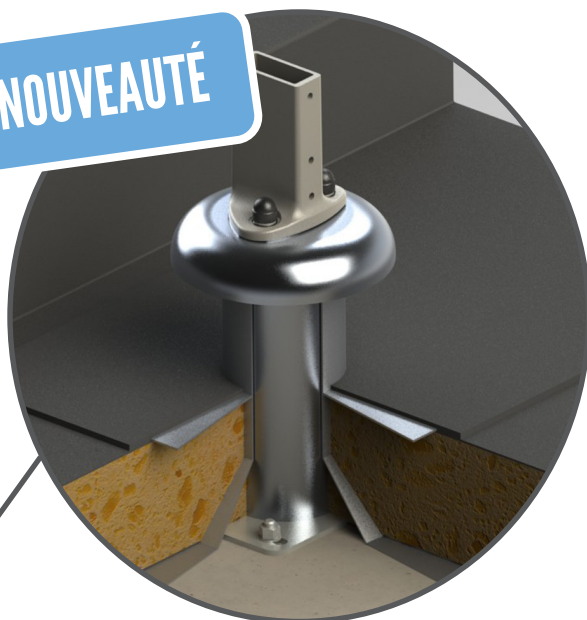
Horizontal load of service: 30 deN/ml

Fastening: 4 M10 plugs

Depending on the type of support, we suggest and recommend the more suitable plugs.

Comply with the European standard EN ISO 14122-3 and the French standard NF E85 -015.

NOUVEAUTÉ

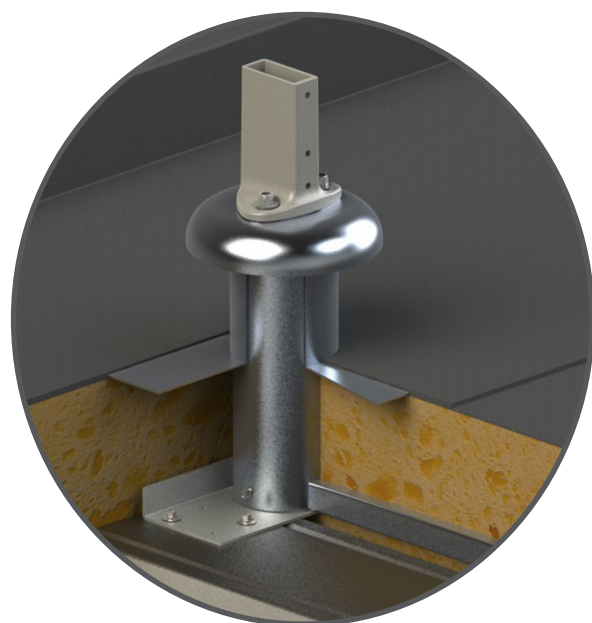


D SHOE ISOLATED SLAB GUARDRAIL

The D shoe is the only one on the market which allows to keep 1,5 meter spacing between two uprights and work on important watertightness complex.

D SHOE ISOLATED METAL DECK ALU

We also can provide you an isolated metal deck D shoe version. This kind of product can be used when you have a watertightness deck support.



D SHOE ISOLATED SLAB GUARDRAIL

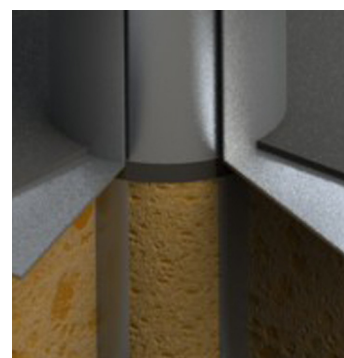
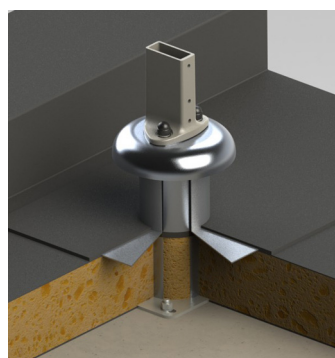
| MODEL | STRAIGHT | INCLINED | CURVED | FOLDABLE |
|-----------------------------------|----------|----------|--------|----------|
| Handrail + middle rail | VSD-D2 | VSD-i2 | VSD-C2 | VSD-R2 |
| Handrail + middle rail + toeboard | VSD-D3 | VSD-i3 | VSD-C3 | VSD-R3 |


ISOLATED METAL DECK ALU D SHOE

| MODEL | STRAIGHT | INCLINED | CURVED | FOLDABLE |
|-----------------------------------|----------|----------|---------|----------|
| Handrail + middle rail | VSDP-D2 | VSDP-i2 | VSDP-C2 | VSDP-R2 |
| Handrail + middle rail + toeboard | VSDP-D3 | VSDP-i3 | VSDP-C3 | VSDP-R3 |

OPTION: D SHOE THERMAL BRIDGE BREAK

To avoid a thermal bridge, we can provide you an option which includes an isolating system with a PA washer (Polyamide): this system creates a cutting in the external envelope of the post and by filling the isolated part with a PU foam (Polyurethane).





VECTACO® straight parapet guardrail (VA-D2)

STANDARDS

NF EN ISO 14122-3
& NF E85-015

VECTACO® PARAPET GUARDRAIL

VECTACO® parapet guardrail is a collective protection system against falls from height designed to protect flat roofs not accessible to public. It has been design for a quick and simple set-up notably thanks to the swage handrails and middle rail.

VECTACO® parapet guardrail is the best solution when the parapet height is higher than 100 mm.

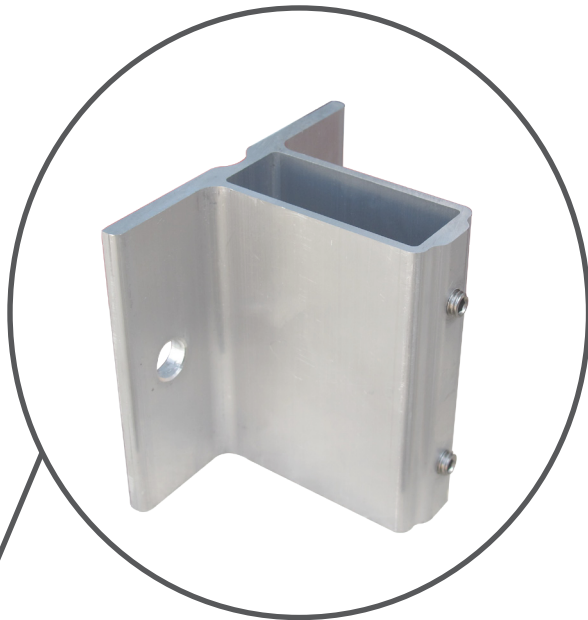
Guardrail material: aluminum.

Coating: raw, anodized or powder coated (ral colours) upon request.

Adjustable handrail and middle rail angles.

Tubes with sinking nozzles which fit together

Comply with standards: European EN 14 122-3 and French NFE 85-015.

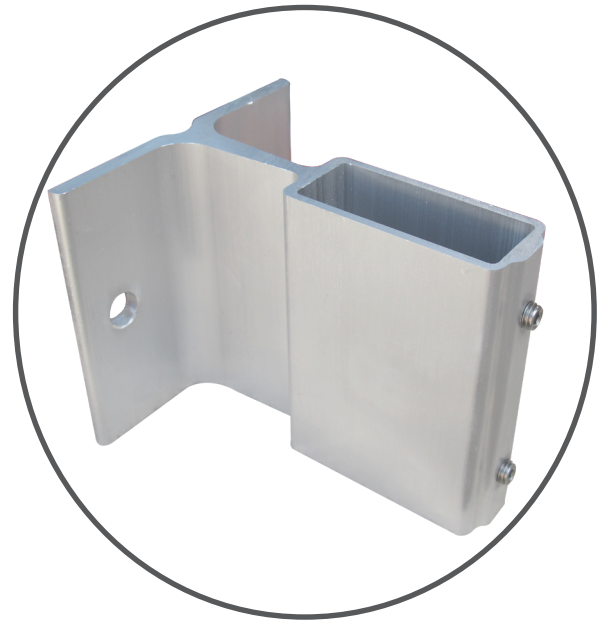


OFFSET PARAPET BASE

When there is an offset (covering, masonry-work, etc.), we offer another version which is the 60 mm offset parapet fixing guardrail.

PARAPET BASE

The VECTACO® guardrail can be fixed inside or outside of the parapet.

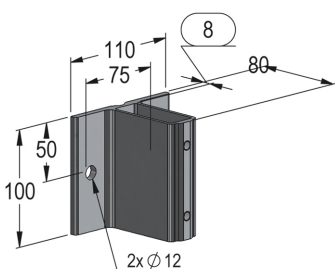


PARAPET BASE

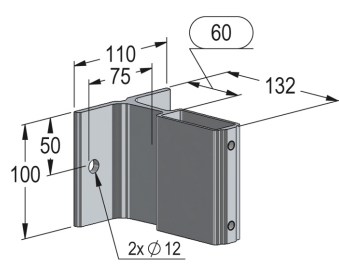
| MODEL | STRAIGHT | INCLINED | CURVED | FOLDABLE |
|-----------------------------------|----------|----------|--------|----------|
| Handrail | VA-D1 | VA-i1 | VA-C1 | VA-R1 |
| Handrail + middle rail | VA-D2 | VA-i2 | VA-C2 | VA-R2 |
| Handrail + middle rail + toeboard | VA-D3 | VA-i3 | VA-C3 | VA-R3 |

OFFSET PARAPET BASE

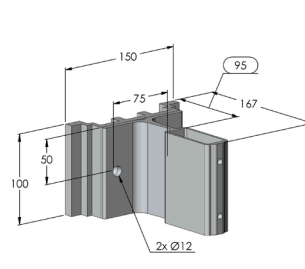
| MODEL | STRAIGHT | INCLINED | CURVED | FOLDABLE |
|-----------------------------------|----------|----------|--------|----------|
| Handrail | VAD-D1 | VAD-i1 | VAD-C1 | VAD-R1 |
| Handrail + middle rail | VAD-D2 | VAD-i2 | VAD-C2 | VAD-R2 |
| Handrail + middle rail + toeboard | VAD-D3 | VAD-i3 | VAD-C3 | VAD-R3 |



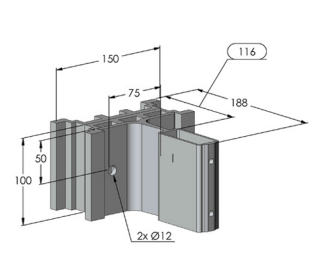
Déport 8 mm



Déport 60 mm



Déport 95 mm



Déport 116 mm

VECTACO® inclined z plate fixation guardrail (VZ-i2)

STANDARDS

NF EN ISO 14122-3
& NF E85-015

VECTACO® Z PLATE FIXATION GUARDRAIL

VECTACO® Z plate guardrail is a collective system against falls from height designed to protect flat roofs not accessible to public. It is the best solution for a fixation on top of the parapet and is used to keep the watertightness system (cap).

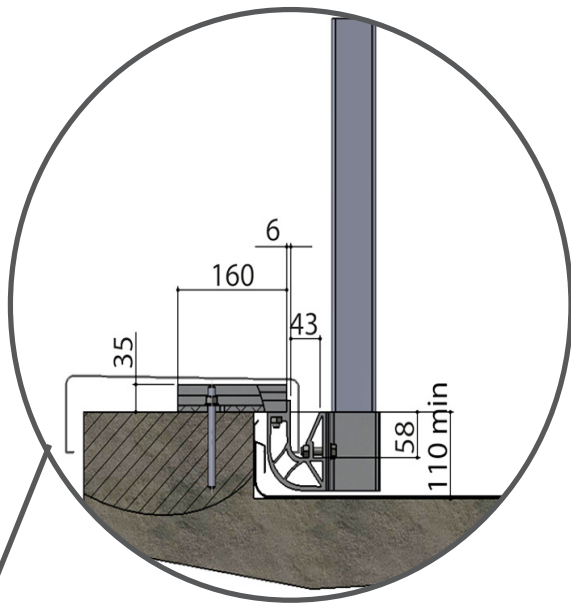
Guardrail material: aluminum.

Z plate material: aluminum.

Coating: raw, anodized or powder coated (ral colours) upon request.

Fastenings: 2 M10 plugs

Comply with the European standard EN ISO 14122-3 and the French standard NF E 85-015.



SABOT Z

Son faible encombrement en hauteur permet de se fixer sur des acrotères bas (à partir de 110 mm de hauteur).

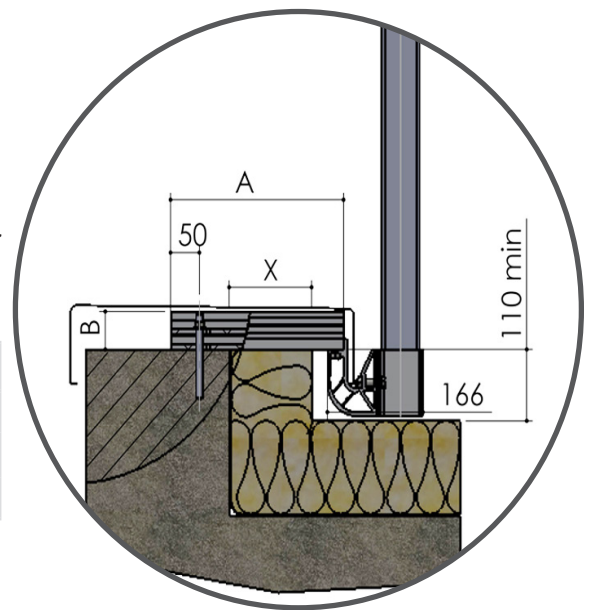
La forme du sabot z permet le passage d'une retombée importante de la couverture.

SABOT Z ACROTÈRE ISOLÉ

Cette version rallongée du sabot z permet de se fixer à travers les isolants de 60 à 140 mm.

| MODÈLE* | A | B |
|-------------------------------|--------|-------|
| Pour x jusqu'à 60 mm | 220 mm | 35 mm |
| Pour x jusqu'à 61 mm à 100 mm | 260 mm | 56 mm |
| Pour x de 101 mm à 140 mm | 300 mm | 56 mm |

* Other sizes upon request.



SABOT Z :

| MODELS | STRAIGHT | INCLINED | CURVED | FOLDABLE |
|------------------------|----------|----------|--------|----------|
| Handrail | VZ-D1 | VZ-i1 | VZ-C1 | VZ-R1 |
| Handrail + middle rail | VZ-D2 | VZ-i2 | VZ-C2 | VZ-R2 |

SABOT Z ACROTÈRE ISOLÉ :

| MODELS | STRAIGHT | INCLINED | CURVED | FOLDABLE |
|------------------------|----------|----------|--------|----------|
| Handrail | VZP-D1 | VZP-i1 | VZP-C1 | VZP-R1 |
| Handrail + middle rail | VZP-D2 | VZP-i2 | VZP-C2 | VZP-R2 |

VECTACO® straight metal deck guardrail (VBA-D3)

STANDARDS

NF EN ISO 14122-3
& NF E85-015

VECTACO® METAL DECK GUARDRAIL

VECTACO® metal deck roof is a collective protection system against falls from height designed to protect flat roofs not accessible to public. This guardrail has been designed to be used on metal deck spans center distance 250 to 333 mm (for other sizes, please consult us).

It is the best solution for fixation on metal deck spans without cut and protects the tightness complex.

It has been design for a quick and simple set-up notably thanks to the swage handrails and middle rail.

Fastening: 8 Self drilling screw with washers

| MODEL | STRAIGHT | INCLINED | CURVED | FOLDABLE |
|-----------------------------------|----------|----------|--------|----------|
| Handrail + middle rail | VBA-D2 | VBA-i2 | VBA-C2 | VBA-R2 |
| Handrail + middle rail + toeboard | VBA-D3 | VBA-i3 | VBA-C3 | VBA-R3 |

VECTACO® inclined top fix guardrail (VS-i2)

STANDARDS

NF EN ISO 14122-3
& NF E85-015

VECTACO® TOP FIX GUARDRAIL

VECTACO® top fix guardrail is a collective protection system against fall from height. It is the best solution to provide safety to terraces.

It has been design for a quick and simple set-up notably thanks to the swage handrails and middle rail.

Guardrail material: aluminum.

Coating raw, anodized or powder coated (ral colours) upon request.

Adjustable handrail and middle rail angles.

Tubes with sinking nozzles which fit together.

Comply with standards: European EN 14 122-3 and French NFE 85-015.

| MODEL | STRAIGHT | INCLINED | CURVED | FOLDABLE |
|-----------------------------------|----------|----------|--------|----------|
| Handrail | VS-D1 | VS-i1 | VS-C1 | VS-R1 |
| Handrail + middle rail | VS-D2 | VS-i2 | VS-C2 | VS-R2 |
| Handrail + middle rail + toeboard | VS-D3 | VS-i3 | VS-C3 | VS-R3 |

VECTACO® free standing folding guardrail (VAP-R2)

STANDARDS

NF EN ISO 14122-3
& NF E85-015



FOLDING SYSTEM FOR VECTACO® GUARDRAIL

Le garde-corps rabattable VECTACO® est un système de protection collective antichute destiné à protéger les toitures terrasses non accessibles au public. En position rabattue, le garde-corps rabattable VECTACO® n'est plus visible de l'extérieur du bâtiment.

Guardrail material: aluminum.

Coating: raw, anodized or powder coated (ral colours) upon request.

Weight of a plastic pad (x2) : 12,5 kg.

Folding gate system in the corners

Comply with the European standard EN ISO 14122-3 and the French standard NF E 85-015.

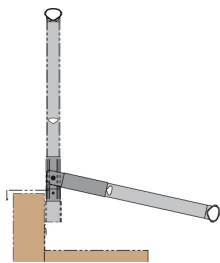


FOLDABLE ARTICULATION

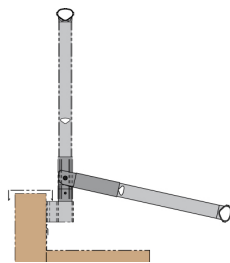
This patented system can be installed on every type of guardrails (free standing, parapet, offset parapet, top fixed, z plate, roof slab and metal deck roof).

RÉGLEMENTATION

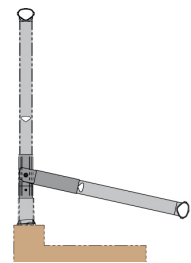
Les intervenants doivent être équipés d'une protection antichute (ligne de vie, point d'ancrage, etc) lors de la manipulation du garde-corps rabattable.



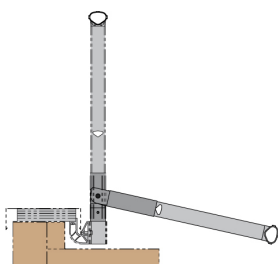
Garde-corps en applique



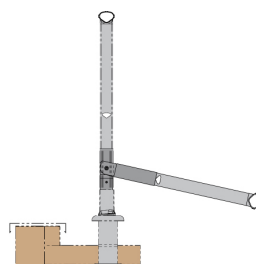
Garde-corps en applique déporté



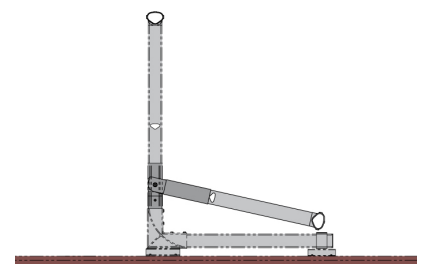
Garde-corps sur acrotère



Garde-corps sabot z



Garde-corps sur dalle



Garde-corps sur bac acier

VECTACO® skylights protection with self-closing gate (VL1700)

STANDARDS

NF EN ISO 14122-3
& NF E85-015



VECTACO® SKYLIGHTS PROTECTION

The VECTACO® guardrail delivered in kit is used as a peripheral protection for any type of skylight. The clipped soles and the plastic pads ensure a complete protection of the watertightness. Each upright is composed of 2 plastic pads.

Guardrail material: aluminum.

Coating: raw, anodized or powder coated (ral colours) upon request.

Plastic pad weight (x2): 12,5 kg.

Self-closing gate optional.

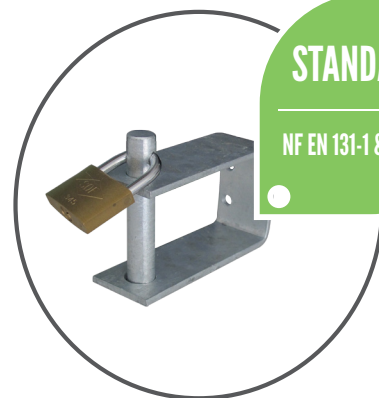
Adjustable angles.

Comply with standards: European EN 14 122-3 and French NFE 85-015.

| REFERENCE | SKYLIGHT DIMENSIONS | GUARDRAIL DIMENSIONS |
|-----------|---------------------|----------------------|
| VL1200 | 1200 x 1200 mm | 1500 x 1500 mm |
| VL1700 | 1700 x 1700 mm | 2000 x 2000 mm |
| VL2200 | 2200 x 2200 mm | 2500 x 2500 mm |



CROCHETS



STANDARDS

NF EN 131-1 & EN 131-2

ANTIVOL AVEC CADENAS



SYSTÈME DE BLOCAGE



BARRE D'ACCROCHE

VECTALADDER® TWO-SECTION EXTENSION LADDER

VECTALADDER® two-section extension ladder is easy to install for short interventions. It is used the access lifts or roofs for works of maintenance.

Material: aluminum.

Uprights: 65 x 24 mm.

Nonslip rungs: 30 x 30 mm.

Hook for hang bar section $\varnothing 30$ mm (other sizes upon request).

Centre-to-centre distance between rungs: 280 mm

| REFERENCE | LENGHT FOLDED | LENGHT UNFOLDED | RUNGS | WEIGHT |
|-----------|---------------|-----------------|-------|--------|
| 02682 | 1720 mm | 2521 mm | 6 | 7 kg |
| 03042 | 2000 mm | 3081 mm | 7 | 8 kg |
| 02683 | 2280 mm | 3641 mm | 8 | 9 kg |
| 02684 | 2560 mm | 4201 mm | 9 | 10 kg |
| 03043 | 2840 mm | 4761 mm | 10 | 11 kg |
| 03044 | 3120 mm | 5321 mm | 11 | 12 kg |
| 03086 | 3400 mm | 5881 mm | 12 | 13 kg |
| 03087 | 3680 mm | 6441 mm | 13 | 14 kg |

VECTALADDER® ALU PRO LINE SIMPLE LADDER



VECTALADDER® alu pro line simple ladder has been designed for a professional use.

It is made out with reinforced sections.

Material: aluminum 6063 T5.

Upright: 65 x 24 mm.

Nonslip rungs: 30 x 30 mm crimped

Centre-to-centre distance between rungs: 280 mm.



| REF | LENGHT / WIDTH | RUNGS | WEIGHT |
|-------|------------------|-------|---------|
| 00168 | 1720 mm / 350 mm | 6 | 3 kg |
| 00169 | 2000 mm / 350 mm | 7 | 3,25 kg |
| 02359 | 2280 mm / 350 mm | 8 | 3,5 kg |
| 00172 | 2840 mm / 350 mm | 10 | 4,5 kg |
| 03333 | 3120 mm / 450 mm | 11 | 5,25 kg |
| 00173 | 3400 mm / 450 mm | 12 | 7,5 kg |
| 00174 | 3960 mm / 450 mm | 14 | 10 kg |
| 01285 | 4520 mm / 450 mm | 16 | 11 kg |

VECTALADDER® EXIT CROSSES

Other references are upon request.



*Straight exit crosses simple fixation -
Ref: VLDi01.*



*Straight exit crosses double fixation -
Ref: VLDA01R.*



*Foldable exit crosses for skylight -
Ref: VL04.*



VECTALADDER® CAGE LADDER

The cage ladder aluminum VECTALADDER® is a device giving access in height zones to authorized staff. With a width of 600 mm, the safety cage ladder VECTALADDER® is a wider market and that allows an optimal comfort of use.

Material: aluminum.

Uprights: 65x24 mm.

Available equipment: landing steps (4 standard models), exit landings (3 standard models), self-closing gate, safety doors and trapdoors (4 standard models), changing flights and side exit.

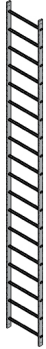
VECTALADDER®

CAGE LADDER COMPONENTS

STANDARDS

NF EN ISO 14122-4
& NF E85-016

LADDER / FRONT EXIT / SELF-STANDING EXIT LAND



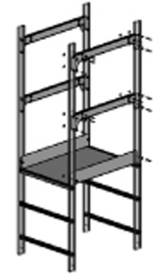
Aluminum ladder 2520 mm.
Aluminum ladder 3080 mm.
Aluminum ladder 4200 mm.
Aluminum ladder 5040 mm.



Front exit 3 rungs
Front exit 4 rungs
Front exit 5 rungs.

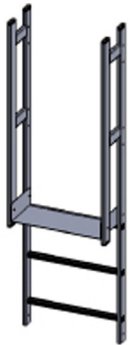


Sortie de face 3 échelons
+ portillon 500 mm.



Kit 800 mm self-standing exit
landing.
Kit 1000 mm self-standing exit
landing.

LANDING STEP / CHANGING FLIGHTS



Kit landing step 250 mm.
Kit landing step 500 mm.



Kit landing step 250 mm with
500 mm gate assembled.

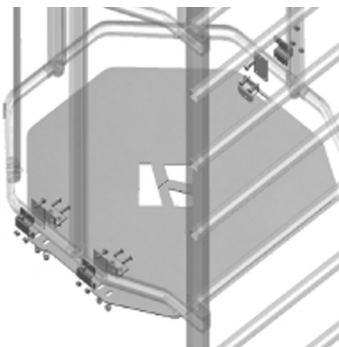


Kit landing step 500 mm with
500 mm gate assembled.



Universal Changing flights
(left or right side).

TRAPDOOR



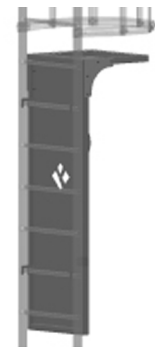
Safety trapdoor.



Kit safety half door.



Kit simple safety door.



Kit complete safety door.

VECTAWAY® CROSS-OVER LADDER

Alu crossover ladder have been designed to adapt any type of configuration.
Other sizes upon request.

| | | | |
|----------------------------|---------|---------|---------|
| NUMBER OF RUNGS | 3 | 4 | 5 |
| HEIGHT TO OVERCROSS | 770 mm | 1050 mm | 1330 mm |
| FLOOR LENGTH | 1500 mm | 1500 mm | 1500 mm |



VECTAWAY® FOOTBOARD

VECTALADDER® footboard allows to pass in full safety above acroteria or to reach objects easily in height.

Material: aluminum.
Clipped soles.
1st rung height: 230 mm.
2nd rung height: 460 mm.
Width: 643 mm.



VECTAWAY® SHED

The shed VECTAWAY® passage allows the crossing of a "shed". The gangway allows moving on fragile and slippery roofs safely. Free standing kit system without any fixing on the structure.



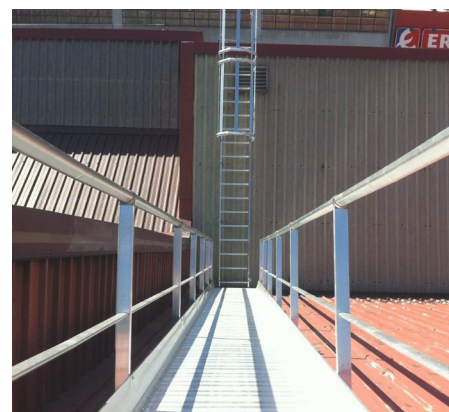
VECTAWAY® GANGWAY

The entire gangway VECTAWAY® allows moving on fragile and slippery roofs safely.

The VECTAWAY® gangway can be equipped with VECTACO® guardrails applique (handrail + middle rail+ toeboard) on one or both sides. Safety gate (Réf. : 01128) adapt to the guardrail Fixation on metal deck, asbestos cement, standing seam roof or any type of support upon request.

| REFERENCE | WIDTH* | LENGHT* | WEIGHT |
|-----------|--------|---------|----------|
| 03099 | 600 mm | 3000 mm | 14 kg/ml |
| 03100 | 800 mm | 3000 mm | 16 kg/ml |

* Other sizes upon request.



VECTAWAY® crossover gangway (VSDLA02)



**MONTAGE RAPIDE SUR SITE : 10 MINUTES / 2 PERSONNES
(LIVRÉ EN KIT PRÉMONTÉ)**

VECTAWAY® CROSSOVER GANGWAY

VECTAWAY® crossover gangway is a piece of equipment used to get over obstacles. It allows to get over parapets, casings, turrets and expansion joints safely. The plastic pads and clipped soles preserve the roof tightness.

The handles of the plastic pads allow a good control and optimize handling.

| MODEL | HEIGHT (H)* | FLOOR LENGHT (L)* | WEIGHT | REFERENCE |
|-----------|-------------|-------------------|--------|-----------|
| 2x2 steps | 550 mm | 2170 mm | 161 kg | VSDLA02 |
| 3x3 steps | 755 mm | 2548 mm | 168 kg | VSDLA03 |
| 4x4 steps | 965 mm | 2926 mm | 178 kg | VSDLA04 |
| 5x5 steps | 1175 mm | 3305 mm | 185 kg | VSDLA05 |

* Other sizes upon request.



ACCESS GANGWAY FOR TECHNICAL MATERIAL



The gangway allows the maintenance of technical material (ex: climate control block) in complete safety.

This collective protection system against falls from height is in conformity with the European standard EN ISO 14122-2 and with the French standard NF E 85-014.

The access gangways for technical material are suitable for all kind of configuration.

VECTACO® DEMARCATION SYSTEM



VECTACO® posts and chains are designed to demarc walking areas on roofs. It is also used to delimit working and safety area. The posts are made out of plastic and the plastic pads are made out of concrete.

Ref: VB01

| | POST + UPRIGHT | UNION CHAIN | CHAINS |
|-----|----------------|-------------|--------|
| REF | 02783 | 01624 | 02272 |

Structure porteuse pour bloc climatisation



SUPPORTING STRUCTURE FOR TECHNICAL MATERIAL

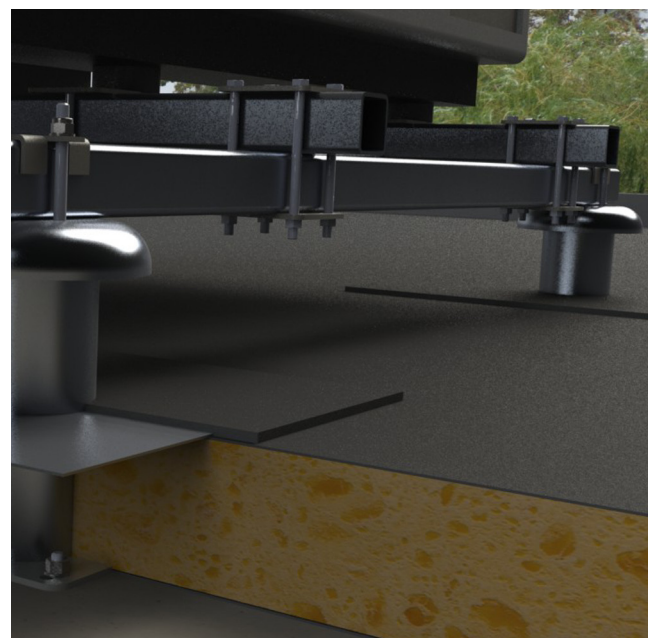
We supply by kit an aluminum modular system to settle any kind of technical equipment (ex: climate control block).

The structure is fixed by D plate system through the waterproofing complex.

The structure can also be fixed on a metal deck roof with suitable posts.

In conformity with DTU 20.12 and 43.1.

We supply an installation plan and a resisting calculation note for any kind of structure.





VECTASAFE® ALU ANCHOR POINT

VECTASAFE® anchor point ensures the protection against fall from height for 2 people maximum. It is used to protect the user during maintenance and cleaning works.

Fastenings: 2 M12 plugs

Coating: raw, microbead or powder coated (RAL colours) upon request

Ref: VA01.



VECTASAFE® HANGER PLATE

VECTASAFE® hanger plate is an anchorage system which provides individual protection against falls from height. It is used to protect the user during maintenance and cleaning. It can be installed on metallic or concrete support.

Ref: VA 04 (10) / VA05 (12).



VECTASAFE® ROUND/ SQUARE ANCHOR POST

This post is an economical solution and it is quick to install on concrete, wood or metal beam. The oblong holes enable an adjustable fixing, adaptable on a wide range of supports.

Material: steel S235 JR

Height: 500 mm

Fastenings: 4 M12 plugs, center-to-center distance: from 100 to 150 mm

Ref: VP01 / VP02.

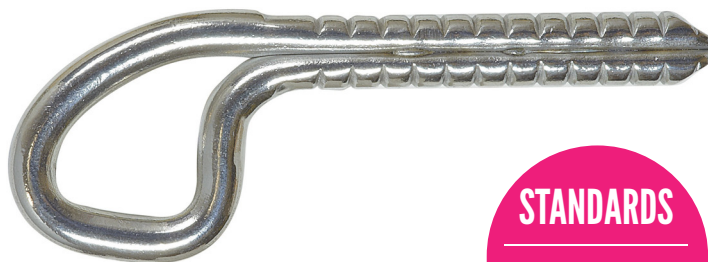
VECTASAFE® ANCHORAGES

VECTASAFE®

GLUE-IN ANCHOR POINT

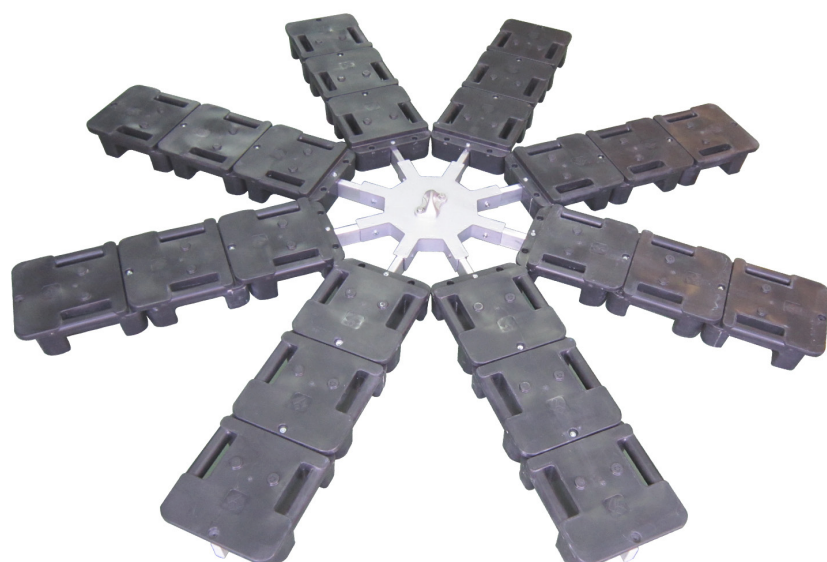
VECTASAFE® glue-in anchor point is an anchorage system which provides an individual protection against falls from height. It is used to protect the user during maintenance and cleaning. It can only be installed on concrete support by chemical glue.

Ref: VA06 (14) / VA07 (15).



STANDARDS

NF EN 795
CLASSE A1



VECTASAFE® DEADWEIGHT ANCHOR

The deadweight anchor VECTASAFE® insures the protection against falls from height for 1 person. It allows the protection of the users during maintenance and cleaning works. It is the best solution when it is technically not possible to be attached on the existing support.

Ref: VACM

VECTASAFE® ALU ANCHOR POINT FIXATION IN METAL DECK

VECTASAFE® anchor point in metal deck was designed to be fixed on the metal deck waves, distance between centres 250 to 330 mm. Its ring allows the fixing of the snap hook directly, connector.

Ref: VB01



DISTRIBUTORS



ZI du Puits Camille, 3 rue du Puits Camille

42000 Saint-Etienne - France

Tel: +33 (0)4 77 47 95 25

Fax: +33 (0)4 77 47 34 89

Mail : info@alsolu.com

WWW.ALSOLU.COM